

A nautical chart of Anna Maria Sound, Florida, showing depth contours, navigational aids, and geographical features like Anna Maria Island, Perico Island, and Palma Sola Bay. The chart includes depth soundings, contour lines, and various navigational markers. Overlaid on the chart is the title 'Reef KMZ Contour Maps User Manual' in large, bold, black font.

Reef KMZ Contour Maps User Manual

**Contains
detailed
instructions on
how to use your
custom KMZ
contour maps**

© 2022 CSS Inc.

INTRODUCTION

Over the years the State and County have been putting down concrete, steel and other material to form artificial reefs where fish can gather and populate. However, for many years the location of the deployment was recorded using Loran and GPS system where the accuracy was intentionally being decreased for national security. In addition, the tug boat, barge and crane offset distances contributed to the inaccuracies. When a deployment was made, the correct location typically was inaccurately recorded. In an effort to eliminate the wasted time and gas driving around looking for dive and fishing sites, we developed a method to visualize the bottom and provide an extremely accurate and detailed map of the bottom structures.

About Contour Charts

The contour maps we produce are a birds-eye (overhead, looking directly down) view of ocean topography (bottom contours or bathymetry). Typically, the closer the contour lines are the sharper the increase or decrease in depth which may indicate a wreck, ledge or reef which attract fish and the greater likelihood you will catch one. Scuba divers will love the ability to see the height and position of the structures and drop anchor, right “down the hatch”. Fisherman will love putting the hook right on the structure and “in the fish’s mouth”. The places to fish and dive are obvious on the charts and extremely accurate.

How the Data Was Collected

Three boats were used for the past 18 years in the collection of hundreds of thousands of sonar data points with the corresponding WAAS GPS Latitude and Longitude from each reef. All contour charts are created from sonar data while slowly “trolling” in a “mowing the lawn” pattern directly over each reef or wreck. For example, more than 25,000 samples were collected for just one area reef. Official county waypoints were used as a starting point and the entire area was scanned. When structures were detected, additional close-in scanning was performed to enhance detail.

How the Plots Were Created

The collected position and depth data is then adjusted for tides, interpolated to fill in uncollected data and analyzed to visualize the bottom. Official county waypoints were overlaid on the plot and the reef deployment data was correlated to nearest detected targets. In some cases, the sites were confirmed by an underwater camera or by scuba diving the site.

How To Use These Maps

For artificial reefs, look for concentric circular contour lines with decreasing depths and color changes per the scale on the right side. These are the structures put down to create the artificial reefs. For ledges and natural reefs look for long closely spaced lines that indicate the presence of a ledge or reef line. We continue to plot ledges and natural reefs until they run out. For example, the Cuda Ledge off of Sarasota is over a mile and a half long. If you move your GPS cursor over a contour chart you will see the exact GPS latitude (North-South) and GPS longitude (East-West) coordinates. A minute of latitude is 6,000 ft so 0.1 minute is 600 feet and 0.01 minute is 60 feet. If you are out on the water and over a reef or wreck, your boats position will be shown over the contour chart.

NOTE: All views on these charts should not be used for navigation.

Contacts

For additional information contact CSS Inc. at 941-739-8394 and please leave a message as I am usually out scanning new reefs and wrecks. Even better is to E-Mail us at Bob@reefsnwrecks.com and we will promptly return your Email. **Checkout our free reef offers for the Alan Fisher reef later in this manual.**

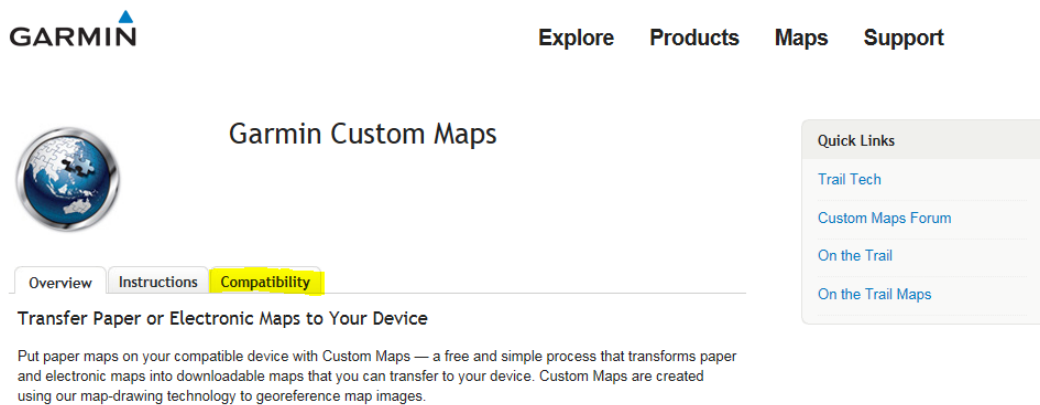
All rights reserved. Reproduction of any part of this work beyond that permitted by Section 107 of the 1976 United States Copyright Act is unlawful.

About the KMZ Format

The charts in the KMZ format are used to view the contour maps in Google Earth, Garmin Homeport or on Garmin Handheld GPS units that support Custom Maps.

For Laptop PCs or any mobile device that supports Google Earth the Custom Contour charts will be displayed on top of the normal Google Earth satellite photo. However, the Contour Charts are mostly off shore and simply shows up in the middle of a blue ocean background. You can zoom in and out using Google Earth as you would normally. You can take measurements and add additional waypoints as you would normally. Google Earth Pro can be downloaded for free from <http://www.google.com/earth/download/gep/agree.html>. Use your Email address and the key GEPFREE to sign in.

For Handheld Garmin GPS Units - Go to <http://www.garmin.com/us/products/onthetrail/custommaps#fragment-1> and select the Compatibility tab to verify your Garmin handheld GPS is listed. If you have a slightly older model, check directly with Garmin because the compatibility list appears to link you only to current models. For example, an Oregon 450 is compatible and is not listed.



GARMIN Explore Products Maps Support

Garmin Custom Maps

Overview Instructions **Compatibility**

Transfer Paper or Electronic Maps to Your Device

Put paper maps on your compatible device with Custom Maps — a free and simple process that transforms paper and electronic maps into downloadable maps that you can transfer to your device. Custom Maps are created using our map-drawing technology to georeference map images.

Quick Links

- Trail Tech
- Custom Maps Forum
- On the Trail
- On the Trail Maps

Next check that your unit has the latest software loaded. The Garmin Support website will be able to direct you to the latest. You may have to download an update program on your PC. After you load your Custom Contour Charts into the handheld GPS you will be able to zoom into a reef area and see the exact same detail as you would see on a PC in Google Earth. In addition, your current position will be shown and if you are over one of the reefs, your position will be shown right on top of the Custom Contour Charts.

You will also need a PC to download the custom contour maps from our website, unzip the files and download the files to a hand held GPS.

About other Formats

We are working hard to produce other formats for other devices. Please contact us if you need support for Raymarine. Check back often to the website as we will be adding additional formats as they are developed.

All the different formats will allow you to find the exact position for a perfect day of fishing or diving.

About the Areas

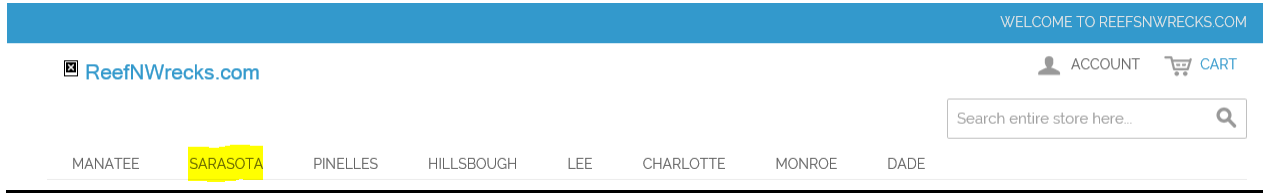
We are also working hard to expand our coverage area. We have scanned over 200 sites around Florida and have started to expand further north and south as well as adding reefs and wrecks on the east coast of Florida. Check back often to the website, as we will be adding additional reefs and wrecks on a weekly basis.

Contributions

If you have a boat, good quality GPS/Depth sounder and are interested in joining our data collection team, please contact us at Bob@ReefsnWrecks.com. If you have a favorite area that you would like scanned, let us know and you will receive the completed scan in the format of your choice for free and a promise to limit the sale of that site.

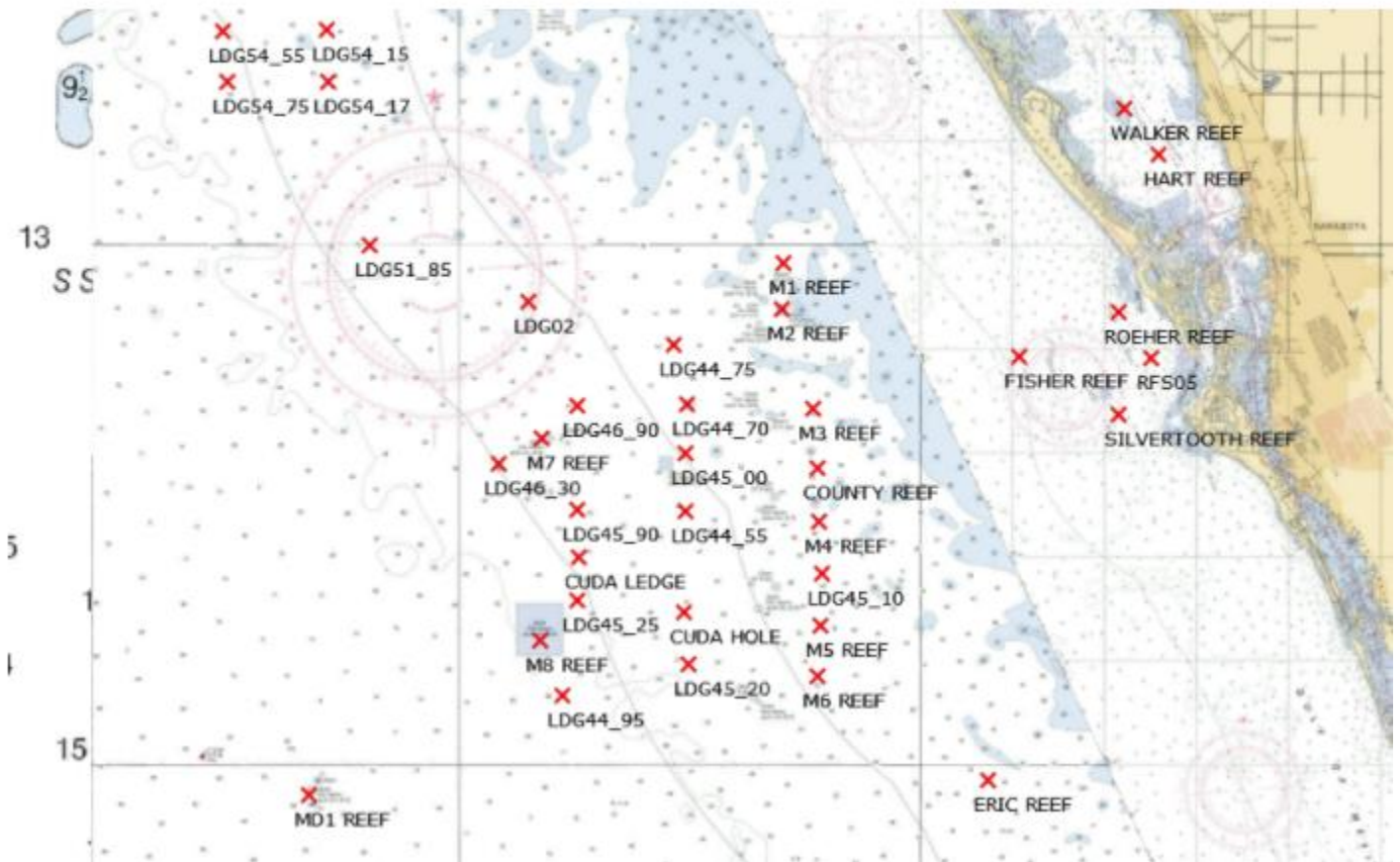
Reefsnwrecks Website

Below is a screen shot from the ReefsnWrecks homepage. It has a series of tabs along the top row listing the Florida counties we have made custom contour maps for. In the following examples I have chosen the SARASOTA tab (yellow highlighted)



When that screen comes up, you will see an overall map of the Sarasota area showing the name and location of all the reefs, ledges and wrecks that we have available for you to purchase and download to your system for immediate use.

Sarasota



Scroll down the page and view the various reefs we have available. Selecting the left box in the Shopping Options section at the top of the page just under the county map. This view of the page gives you a little more detail and a description.

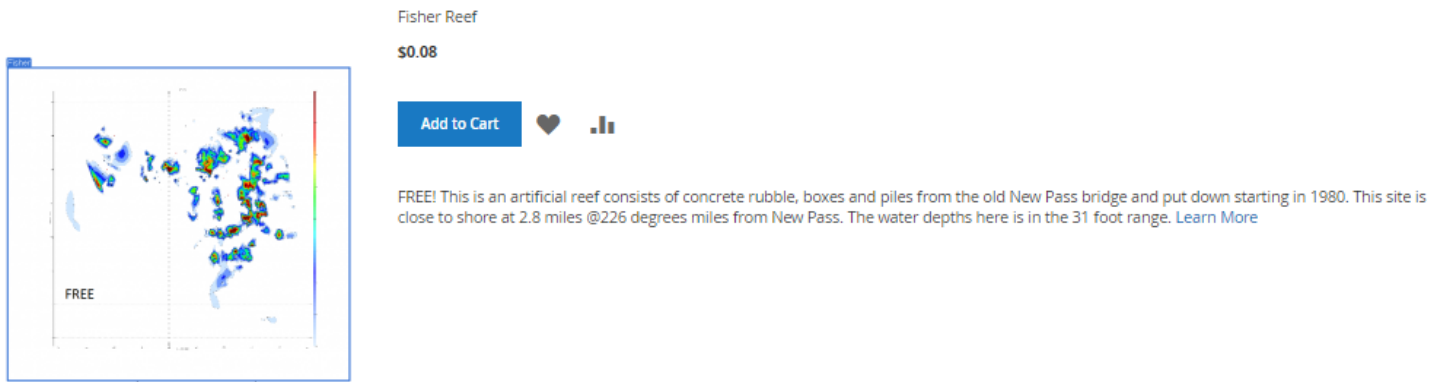
Shopping Options





Items 1-30 of 53

Sort By Product Name ↑

For example, if you selected Sarasota, Fisher Reef, you will see the following screen:

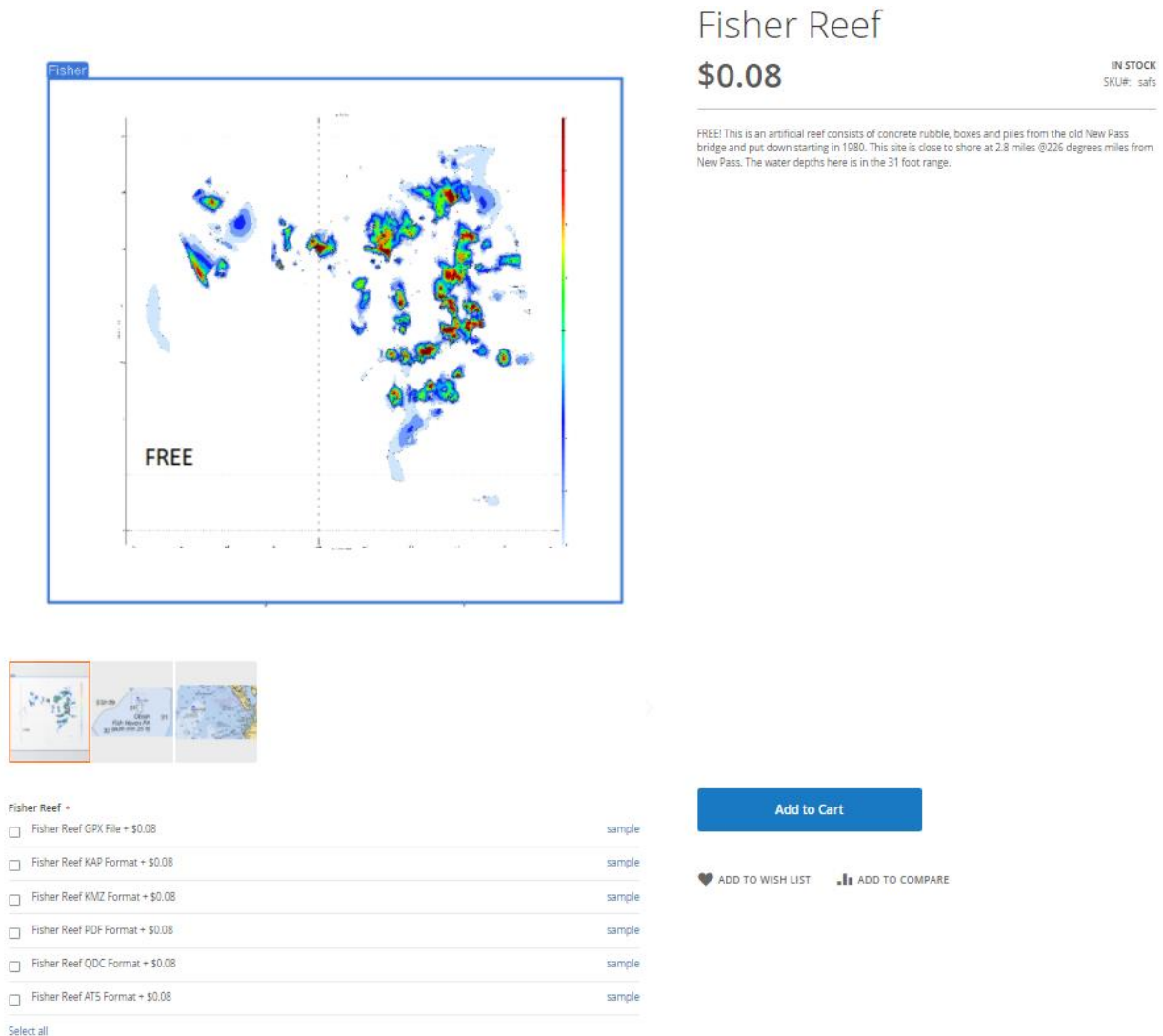


Fisher Reef
\$0.08

[Add to Cart](#)  

FREE! This is an artificial reef consists of concrete rubble, boxes and piles from the old New Pass bridge and put down starting in 1980. This site is close to shore at 2.8 miles @226 degrees miles from New Pass. The water depths here is in the 31 foot range. [Learn More](#)


If you left mouse click on the reef chart or the reef name it will take you to the format selection and Add to cart page.



Fisher Reef

\$0.08 IN STOCK
SKU#: saf5



FREE! This is an artificial reef consists of concrete rubble, boxes and piles from the old New Pass bridge and put down starting in 1980. This site is close to shore at 2.8 miles @226 degrees miles from New Pass. The water depths here is in the 31 foot range.



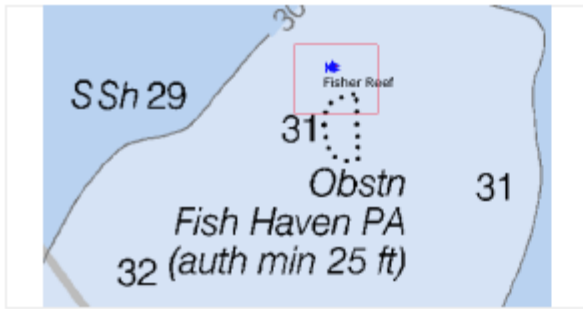
- Fisher Reef GPX File + \$0.08 sample
- Fisher Reef KAP Format + \$0.08 sample
- Fisher Reef KMZ Format + \$0.08 sample
- Fisher Reef PDF Format + \$0.08 sample
- Fisher Reef QDC Format + \$0.08 sample
- Fisher Reef AT5 Format + \$0.08 sample

[Select all](#)

[Add to Cart](#)

 [ADD TO WISH LIST](#)  [ADD TO COMPARE](#)

On middle left of the screen, you will see 3 thumbnail views. For each reef or wreck we have provided three views, a sample of the actual reef contour map, a close-up of the location on the NOAA chart showing the red custom contour reef map coverage and a third view zoomed out so you can get a better idea where the reef or wreck is located. The description will tell you the distance off shore and bearing from the nearest inlet or landmark.



FISHER REEF

IN STOCK

This site is close to shore at 2.8 miles @226 degrees miles from New Pass. The water depths here is in the 31 foot range. The reef consists of concrete rubble and piles from the old New Pass bridge and put down starting in 1980.

MORE VIEWS



FISHER REEF

IN STOCK

This site is close to shore at 2.8 miles @226 degrees miles from New Pass. The water depths here is in the 31 foot range. The reef consists of concrete rubble and piles from the old New Pass bridge and put down starting in 1980.

MORE VIEWS



On the right side you will see a description of the reef or wreck, the distance off shore and bearing from the nearest inlet or landmark, the typical depth in that area and the approximate area shown. On the bottom there is a list of file formats that you can select to purchase. You can select one or all depending on your needs and equipment.

If you select SAMPLE you will be able to download a copy of that format's user manual which has details on ordering, installing and using the selected format.

The GPX format is a file containing the latitude and longitude of points of interest for that reef. It includes all material drops made on an artificial reef, the center of a wreck or a few points along a ledge or drop-off. It is included in all the formats or is available by itself at the base price.

When you select other formats, it adds the additional cost indicated to the base price. For example, ordering the PDF format in the example above will cost \$2.99 (GPX) + \$1.99 (PDF) = \$4.98. Adding the KMZ format to the order will cost \$4.98 + \$1.99 or \$6.97. The total price will be shown in the upper right corner.

SKYWAY BRIDGE REEF

\$6.97

IN STOCK

This site is directly south west of the old Sunshine Bridge approaches. The original two-lane bridge was completed in 1954. The main span of the northbound bridge was demolished in 1992 and the approaches for both old spans were made into the Skyway Fishing Pier State Park. It consists of concrete rubble lined up in rows put down in 1992. The water depths here are in the 12 - 22 foot range.

The KAP format contains the GPX file along with the custom contour chart for use on a PC using a full nautical navigation program named OpenCPN or on a smart phone or tablet like an iPad using a full nautical navigation app called SealQ.

The QDC format contains the GPX file along with the custom contour chart for use on a Garmin Depth sounder or Chartplotter compatible with Quickdraw Contours. (Please check your Garmin unit for compatibility with Quickdraw contours on the Garmin website.) If you have a Garmin Handheld GPS chose the KMZ format.

The PDF format contains the GPX file above with a PDF file containing pages of contour maps that can be printed out and brought with you. It contains a list of the various waypoints, their deploy dates and a brief description of the reef along with an overall view and individual zoomed in views of the reef or wreck. Each view contains a grid so you can determine the GPS location of any interesting point.

The KMZ format contains the GPX file along with the custom contour chart in viewable format on Google Earth or on a Garmin Handheld GPS unit. (Please check your Garmin hand held GPS compatibility for Custom Maps on the Garmin website.

The AT5 format contains the GPX file along with the custom contour chart in viewable format directly on a Lowrance, Simrad or B&G chartplotter. (Please check your Lowrance, Simrad or B&G chartplotter compatibility for Custom Charts on the Lowrance, Simrad or B&G website.

I suggest you download the almost FREE Sarasota, Fisher Reef first and try it out on your unit.

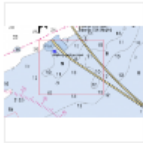

Also, on the right side you will see check boxes for your selection of the format you are purchasing. You can order one or all of the different formats. Each of the graphic chart formats contain the GPX file.

Once you have selected the format you want, select *ADD TO CART*. The following screen will be displayed:

SHOPPING CART

[PROCEED TO CHECKOUT](#)

Skyway Bridge Reef was added to your shopping cart.

| PRODUCT | PRICE | QTY | SUBTOTAL | |
|--|--------|--|----------|---|
|  SKYWAY BRIDGE REEF <i>SKU: msw</i> <i>Download:</i> Skyway Bridge Reef in KAP Format Skyway Bridge Reef in PDF Format | \$6.97 | <input type="text" value="1"/> Edit | \$6.97 |  |

[EMPTY CART](#) [UPDATE SHOPPING CART](#) -OR- [CONTINUE SHOPPING](#)

DISCOUNT CODES [APPLY](#)

SUBTOTAL \$6.97

GRAND TOTAL EXCL TAX **\$6.97**

GRAND TOTAL INCL TAX **\$6.97**

[PROCEED TO CHECKOUT](#)

If you want to select additional reef or wrecks select [CONTINUE SHOPPING](#). If you are finished, select [PROCEED TO CHECKOUT](#).

If you select Proceed to Checkout you will go to the CHECKOUT screen. As a new customer, select *REGISTER* to create an account and complete the requested information. Please be careful when entering your Email address as all purchases you make will result in an Email to you with a link allowing you to download what you have ordered. Please use a strong password and record it for future use. We have no access to your passwords and they are stored in an encrypted format. If you are a returning customer, enter your Email address and Password on the right and select *LOGIN*.

CHECKOUT

CHECKOUT METHOD

REGISTER TO CREATE AN ACCOUNT

Register and save time!

Register with us for future convenience:

Fast and easy check out

Easy access to your order history and status

REGISTER

RETURNING CUSTOMERS

Sign in to speed up your checkout process

Email Address *

* Required Fields

Password *

[Forgot your password?](#)

LOGIN

Enter your name, address and Email address in the fields provided. Please be sure your Email address is correct, as any purchase you make will send a link to that address.

CHECKOUT

1 CHECKOUT METHOD

[Edit](#)

2 BILLING INFORMATION

YOUR CHECKOUT PROGRESS

BILLING ADDRESS

PAYMENT METHOD

First Name *

John

* Required Fields

Middle Name/Initial

Q

Last Name *

Public

Company

Email Address *

JQPublic@ABC.COM

Top section of the Register Form


Note: You must complete the ordering process to have your Email address and password registered. If you back out before ordering and return later, you will have to re-enter your complete ordering information again.

When complete, press *LOGIN* or *CONTINUE* and you will be directed to the CHECKOUT PAYMENT screen.

Select your payment method and select *CONTINUE*.

CHECKOUT

- CHECKOUT METHOD [Edit](#)
- BILLING INFORMATION [Edit](#)
- PAYMENT INFORMATION**
- ORDER REVIEW

 What is PayPal?

You will be redirected to the PayPal website when you place an order.

Credit Card (saved)

[CONTINUE](#) [← Back](#)

YOUR CHECKOUT PROGRESS

BILLING ADDRESS | [CHANGE](#)

John Q Public
55 Main Street
Anytown, Florida, 34888
United States
T: 941-555-1212

PAYMENT METHOD

Complete the forms with the requested payment information and press *CONTINUE*.

CHECKOUT

- CHECKOUT METHOD [Edit](#)
- BILLING INFORMATION [Edit](#)
- PAYMENT INFORMATION [Edit](#)
- ORDER REVIEW**

| PRODUCT | PRICE | QTY | SUBTOTAL |
|---|------------------------------|-----|---------------|
| SKYWAY BRIDGE REEF <i>Download:</i> Skyway Bridge Reef in KAP Format Skyway Bridge Reef in PDF Format | \$6.97 | 1 | \$6.97 |
| | Subtotal | | \$6.97 |
| | Grand Total Excl. Tax | | \$6.97 |
| | Grand Total Incl. Tax | | \$6.97 |

[PLACE ORDER](#) [Forgot an Item? Edit Your Cart](#)

YOUR CHECKOUT PROGRESS

BILLING ADDRESS | [CHANGE](#)

John Q Public
55 Main Street
Anytown, Florida, 34888
United States
T: 941-555-1212

PAYMENT METHOD | [CHANGE](#)

Credit Card (saved)
Credit Card Type: MasterCard
Credit Card Number: xxx-5642
Name on the Card: John Q Public

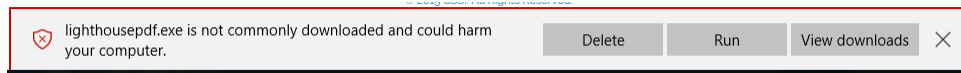
The last step is **ORDER REVIEW** where you can verify your order, billing address and payment method. When done, select [PLACE ORDER](#).

In a few seconds you will receive an Email with a link back to the MY DOWNLOADABLE PRODUCTS screen. Select the blue "Reef XYZ" Format text (highlighted below) to start the download.

Note: You can download the files a maximum of three times.

| ORDER # | DATE | TITLE | STATUS | REMAINING DOWNLOADS |
|-----------|----------|------------------------------------|-----------|---------------------|
| 100000007 | 5/3/2016 | Cuda Ledge - CUDA LEDGE PDF FORMAT | Available | 1 |

You may receive a download message like the one below. This is because the downloaded file is an .exe self-extracting zip file and for security reasons the operating system needs to ask you if you want to proceed. Select Run to continue. No software is installed, only files copied to the folder you select.



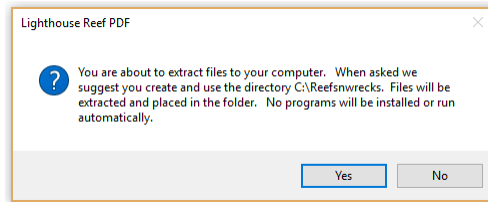
NOTE: We have set the price of Sarasota, Fisher Reef to \$0.08 so you can download a full reef package in any or all the available formats and try them out. Just follow all the instructions above to add it to your cart and checkout. Sorry I have to charge 8¢ because PayPal cannot accept a \$0 payment.

NOTE: All downloadable files are self-extracting .exe files and must be run on a Windows based computer or a computer with Windows compatibility. They cannot be downloaded directly to an Apple computer or tablet. When downloading the .exe files, Microsoft will warn you that the files may be dangerous. Select "Assume the Risk" to override the warning.

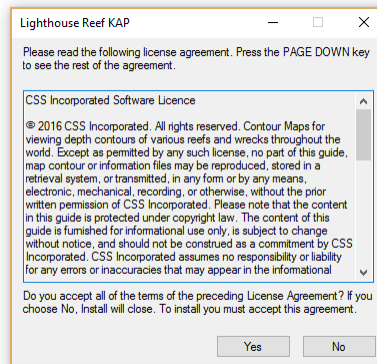
When activated, the files will automatically un-Zip the various files and place them in a folder of your chose. No programs will be run.

Reefsnwrecks Downloaded File Installation

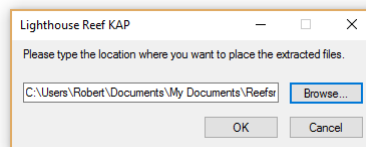
After you select Run the downloaded file will execute and it will give you directions on what to do and where to put the files. The process simply unzips a few files and places them in the folder you specify.



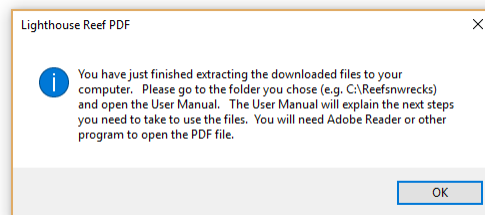
Please read and accept the license agreement.



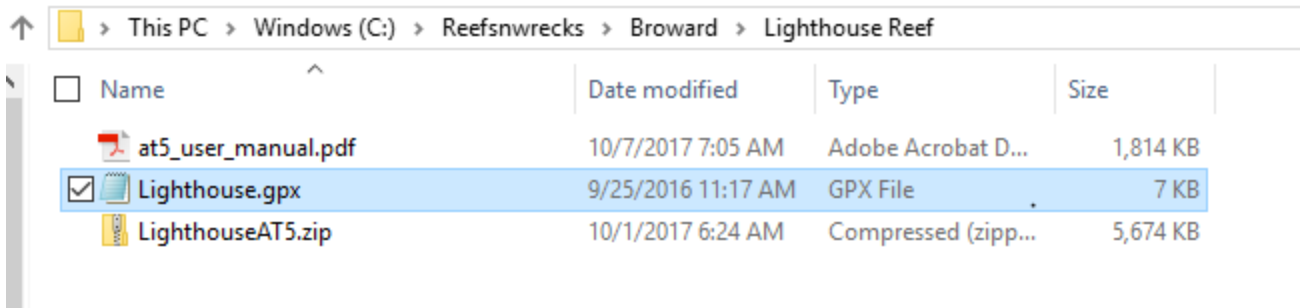
Browse to where you want to put the files. We recommend a dedicated folder called C:\Reefsnwrecks and a folder for each county and reef. For example, C:\Reefsnwrecks\Sarasota\Fisher.



When you are complete you will see this final screen.



It will copy the KMZ_User_Manual.pdf, "Reef".kmz which contains the custom contour maps and "Reef".gpx file which contain all the waypoint for that reef to the folder you direct. We recommend a folder named C:\ReefsnWrecks*County*\Reef but any folder will do. (Our instructions will assume C:\Reefsnwrecks.) Just be consistent and place all downloads into the appropriate folder. You should see a series of KMZ and GPX files. If you have purchased contour charts in the past and are adding new ones, simply put the new ones in the existing folder.



Google Earth and Garmin Custom Maps (KMZ Format)

The KMZ format can be viewed either in Google Earth or a Garmin handheld GPS unit. (For Apple and Android devices we recommend the KAP format and SealQ Open.)

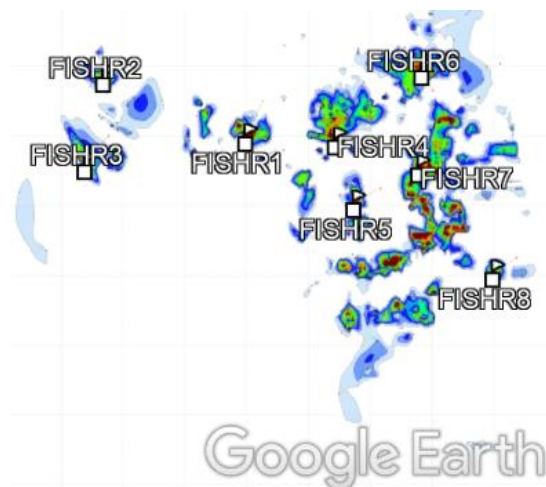
Google Earth on a PC

Ensure the latest copy of Google Earth is installed on your PC. Load Google Earth from their website www.google.com/earth/download/gep/agree.html.

1. Load the ReefKMZ.kmz files to the folder named Reefsnwrecks.
2. Once Google Earth is installed, select File Open, change the file type to the right of File Name to Gps(*.gpx, *.loc, *.mps...) and select the Reef.GPX file and press OK.
- 3.



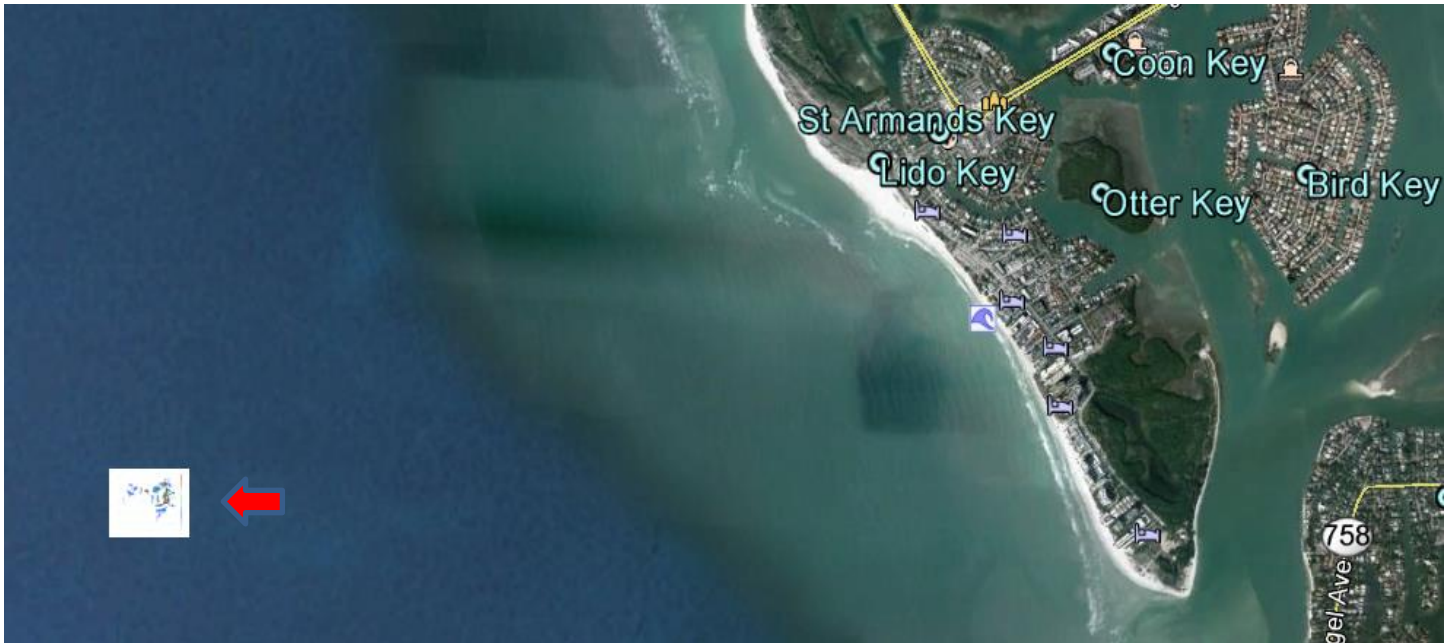
4. Next select File, Open, change the file type to the right of File name to Google Earth (*.kml *.kmz...) and select Reef.KMZ file(s) and click Open.
- 5.



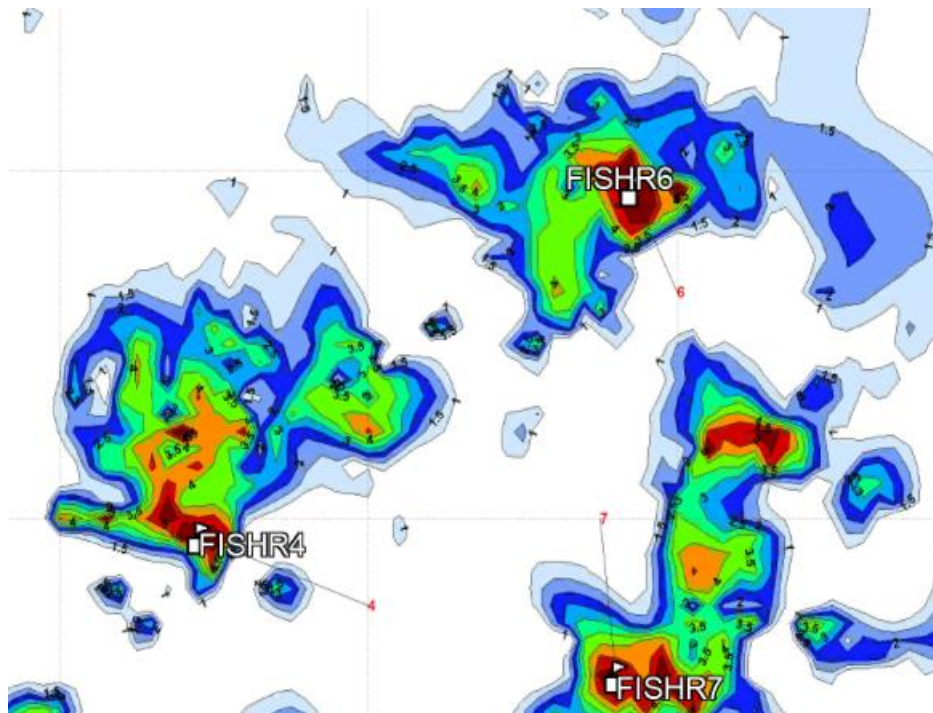
6. Zoom in to see the chart details in context with Google Earth aerial photography.

This process can be repeated with multiple .kmz and .gpx files, and all can be loaded within Google Earth and transitioned between them through normal Google Earth use. Save the files and when the Google Earth application is closed and reopened, and the .kmz files will still be displayed. Keep zooming in to see more detail. Please refer to the program Help file for other features of Google Earth. You can measure distance and area. If the reef is close to shore, you can see what is close by on land.

This is the Alan Fisher reef near Sarasota. You can see the custom contour map to the left of the red arrow.



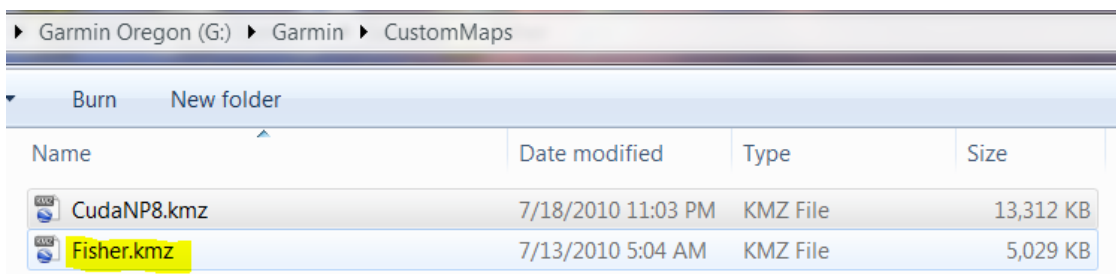
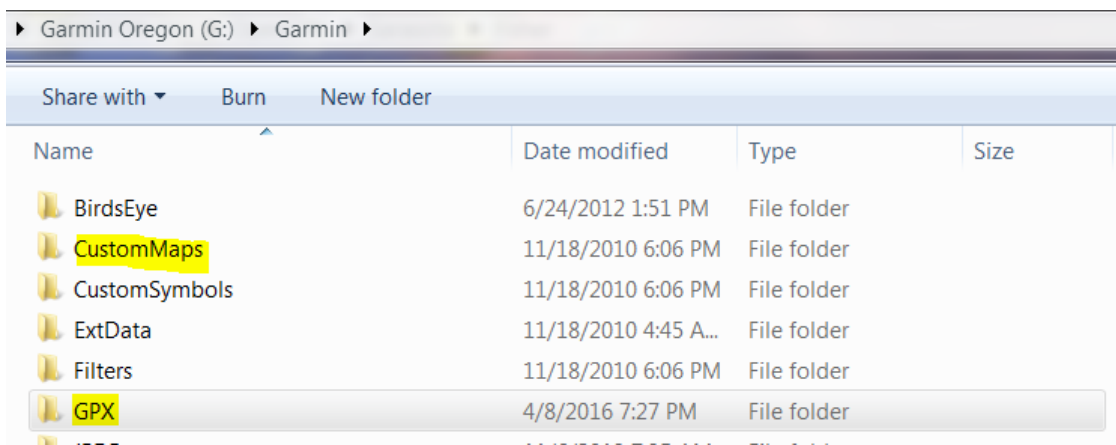
Keep zooming in and you will see more and more detail like the picture below:



Garmin Handhelds

The KMZ files included in the file you purchased need to be downloaded to your GPS. To load them into your GPS:

1. Extract the files in the downloaded EXE file to the Reefsnwrecks folder. The files will be automatically unzipped.
2. Connect your Garmin outdoor handheld device to your computer using the USB adapter cable provided with your unit. Always use the Garmin cable that was supplied, as generic cables have been known not to work.
3. Before downloading your custom map, you must install the latest software for your device. Visit <http://my.garmin.com> for more information on updating your devices firmware.
4. Find the drive:Garmin folder on your connected handheld device and save your custom map .kmz files in the /Garmin/CustomMaps/ directory. (You may need to create a new "CustomMaps" directory if this directory does not exist). Simply copy and paste. See example Garmin Directory below:



Waypoints

As time goes on you will like to explore additional features. Waypoints are one example. We have provided a waypoint file that corresponds to each call out on our custom charts. Select the .gpx file you downloaded and un-zipped and copy it to your GPS. Refer to your GPS user's manual to see how that is done. Typically, by copying it to the GPX folder

If you view or edit a waypoint, information will come up describing the point. We have included a Name, and a brief description of the site, year of deployment and the exact latitude and longitude.



1. Find the Garmin/GPX folder for your connected handheld device and save your custom map .gpx in the /Garmin/GPX/ directory. See example Garmin Directory below:

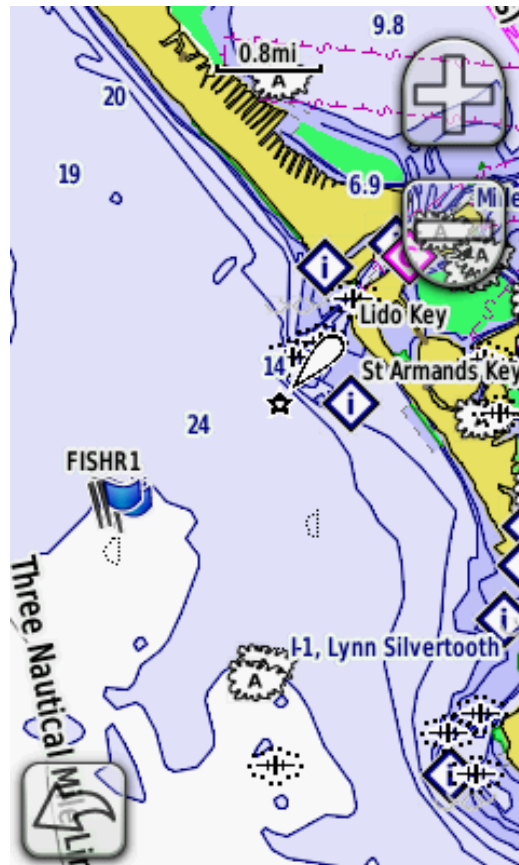
A screenshot of a file explorer window showing the directory structure for a Garmin device. The path is 'Garmin Oregon (G:) > Garmin > GPX'. The window shows a list of folders and files. The 'Fisher.gpx' file is highlighted in yellow.

| Name | Date modified | Type | Size |
|------------|----------------------|-------------|------|
| Archive | 12/26/2015 8:49 A... | File folder | |
| Current | 6/19/2015 1:15 PM | File folder | |
| Nav | 8/10/2015 2:16 PM | File folder | |
| Fisher.gpx | 12/2/2015 2:27 PM | GPX File | 5 KB |

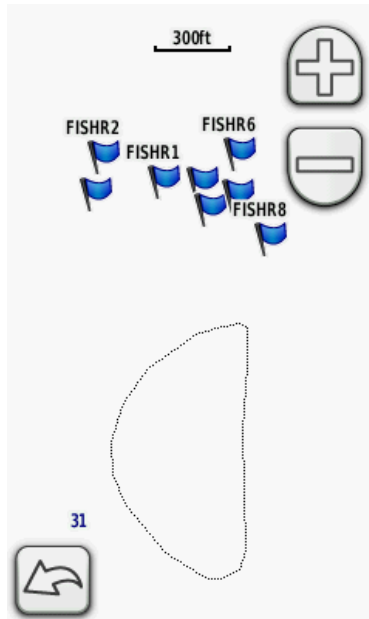
Disconnect your GPS and turn it on. Navigate to the Waypoints screen, (List of waypoints). You should see the waypoints you have entered by loading the GPX file.



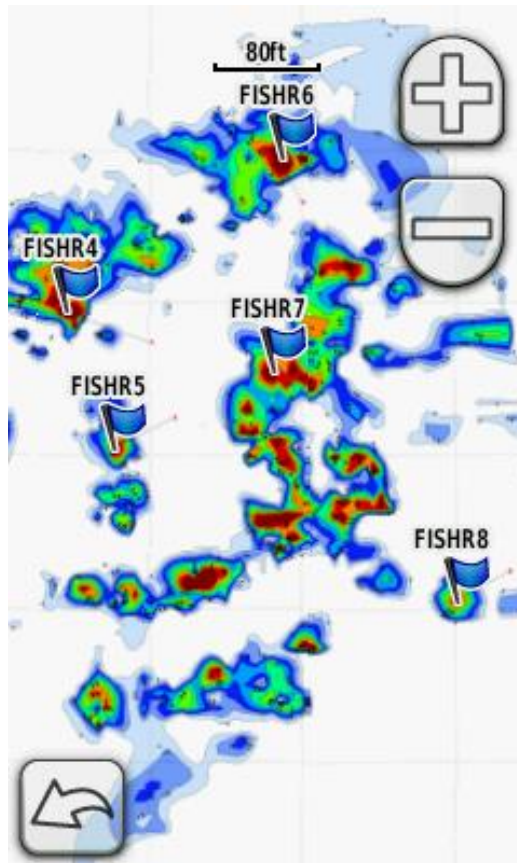
Select FISHR4 and select “Go To”. You should see a screen similar to the one below. Remember different Garmin GPS units have different capabilities and screen sizes. Refer to your GPS user manual for details about yours.



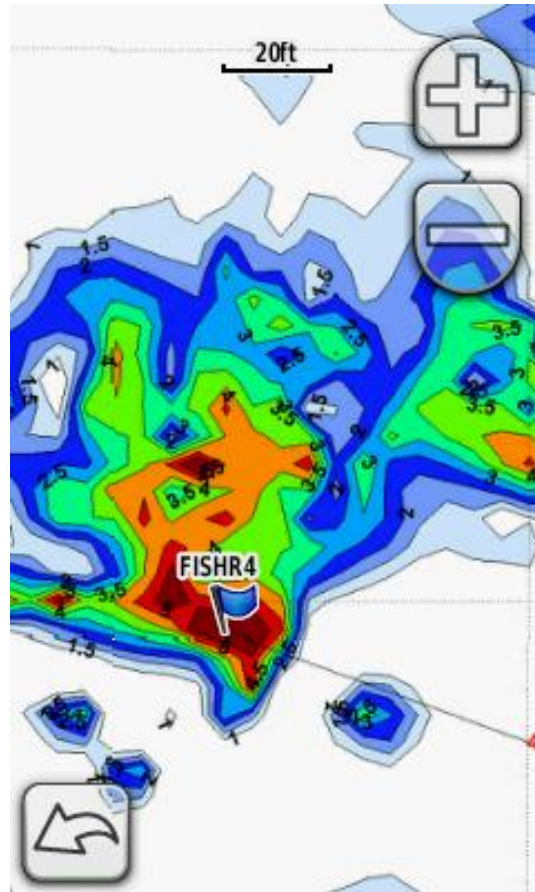
Your custom contour chart will appear only as you zoom in. The screen below shows the screen a few zoom levels before the unit switched to the Custom Map display. That is why It is easier to find it if you load the waypoint file provided and then “Go To” that waypoint, and zoom in to see the reef details.



A few more zoom in's (+) and you then start seeing the custom contour chart.



A few more zoom in's (+) and you can see some very close in details. When actually on site, your boat location would be show in the center of the screen.



Note: Garmin currently has a limit of two (2) custom maps loaded at one time. So, you will need to remove and add files to the /CustomMaps folder, as needed, for the reefs you are going to that day. Simply delete the file in the GPS and add the desired two. This is a limit imposed by Garmin and not a limitation with our files.

Getting Help

Any support questions or problems associated with Garmin GPS or your PC should be directed to their support group or Google Earth support.

Any questions about the Contour Maps should be directed to Bob@reefsnwrecks.com.

Updates and New Charts

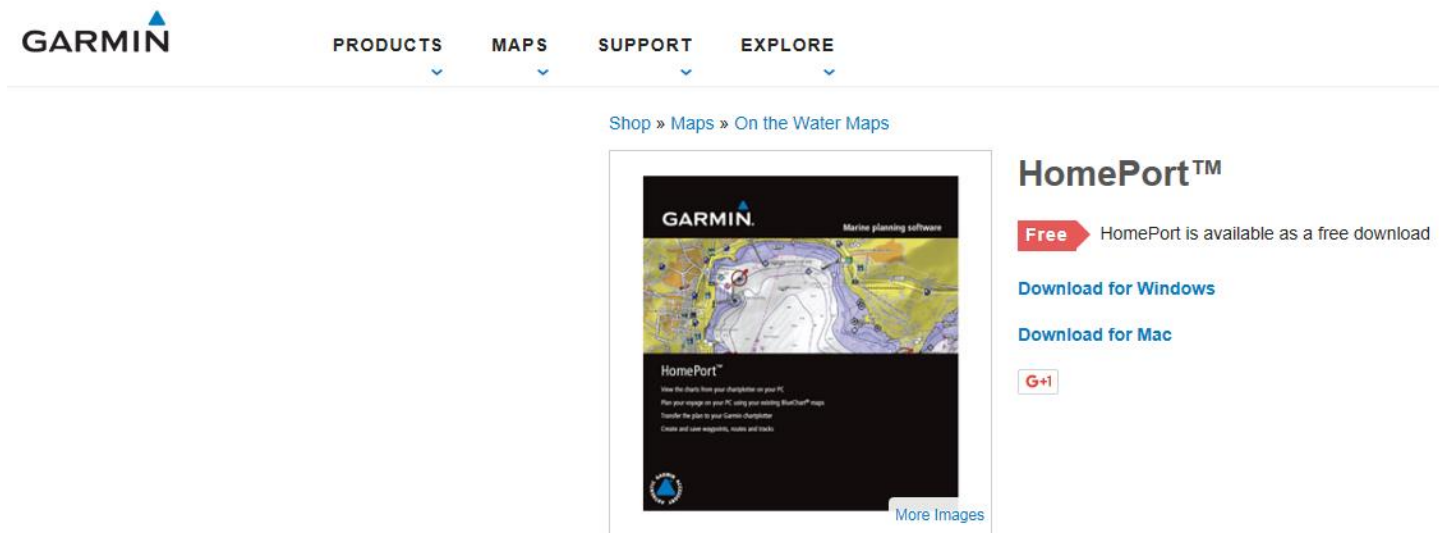
Thank you for your purchase. Check back to the web site often as we are adding new areas and natural ledges to our inventory all the time. Remember, adding new charts are as simple as copying them to the Garmin CustomMaps folder or opening them in Google Earth on your PC.

Garmin Homeport

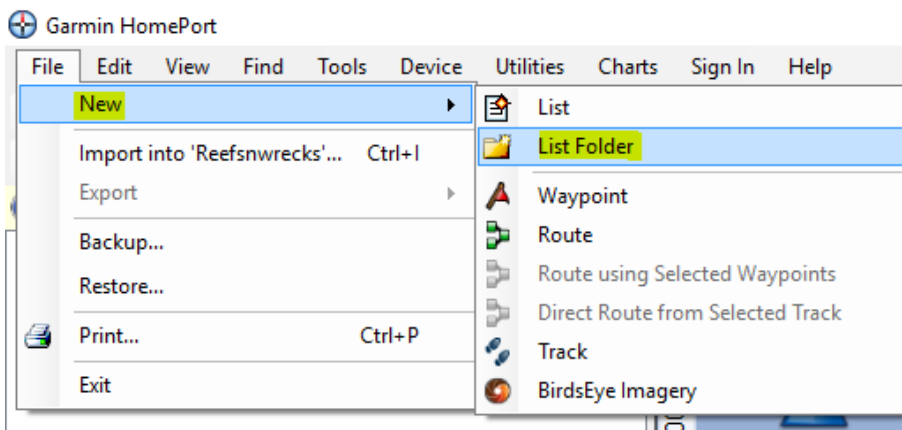
Homeport is a PC based program from Garmin that allows you to see the exact same navigation charts as you will see on your Garmin GPS. The program allows you to insert an SD card which has a copy of the charts that are in your GPS unit and allows you to add waypoints and create routes. After they are created on the PC, you can save them to your computer hard drive and load them into a SD card. The SD card is then brought to your boat, inserted into the SD card slot of your GPS, select a few functions and it simply loads the file into your GPS. By using the computer with a full keyboard, mouse and large screen sitting at a comfortable table makes entering data much simpler.

To load GPX files into your GPS using Homeport follow the following steps:

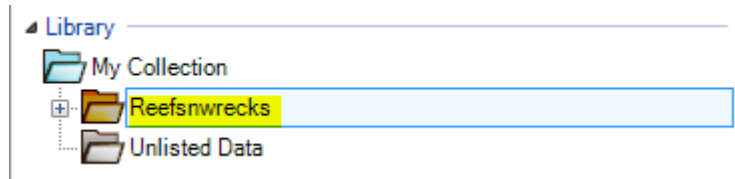
1. To get HomePort, go to <https://buy.garmin.com/en-US/US/prod64242.html>



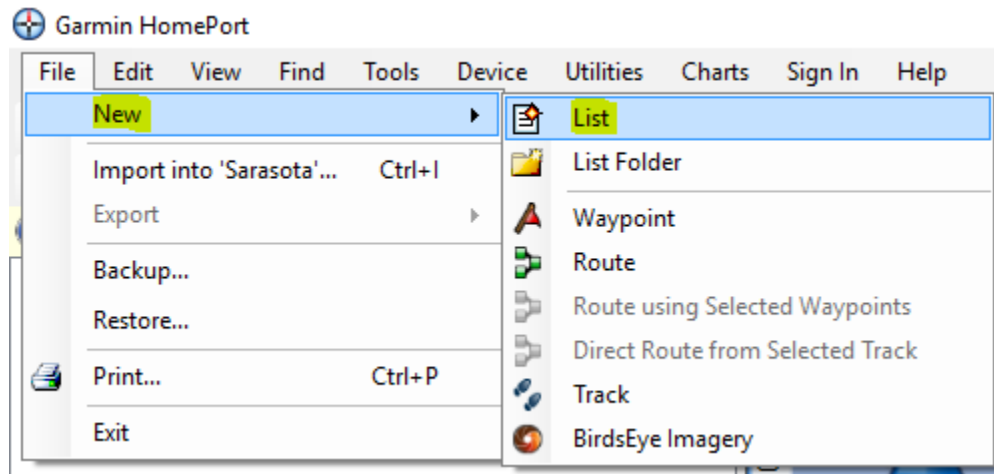
2. Download the software and install it on your computer.
3. Purchase a 4GB to 32GB SD card or a microSD card and adapter for use with your computer and GPS unit. (microSD to SD and/or SD to USB)
4. In upper left corner highlight My Collection. Select FILE > NEW > LIST FOLDER. A folder with the name New Folder will be created.



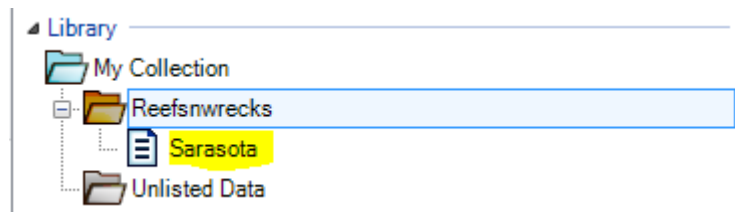
5. While highlighted, change the name to Reefsn wrecks. If not highlighted, click twice slowly to highlight text then change name.



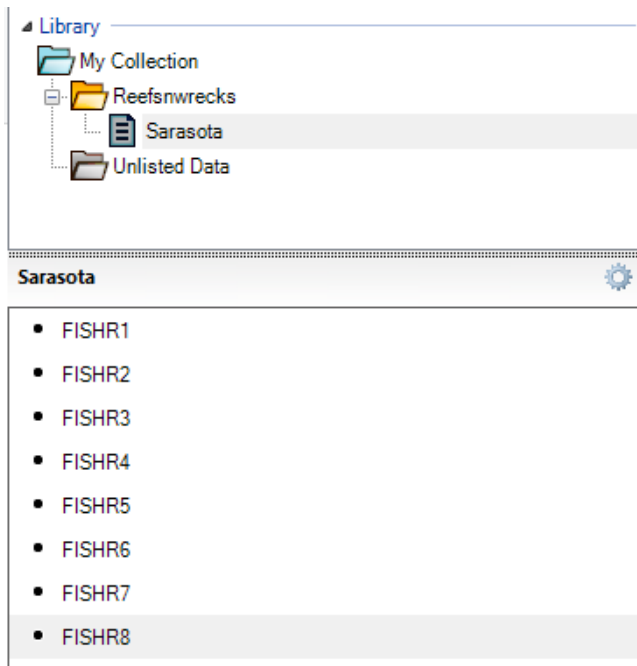
6. Next we want to create county lists under Reefsn wrecks. Highlight Reefsn wrecks and select FILE > NEW > LIST. A New List will be created.



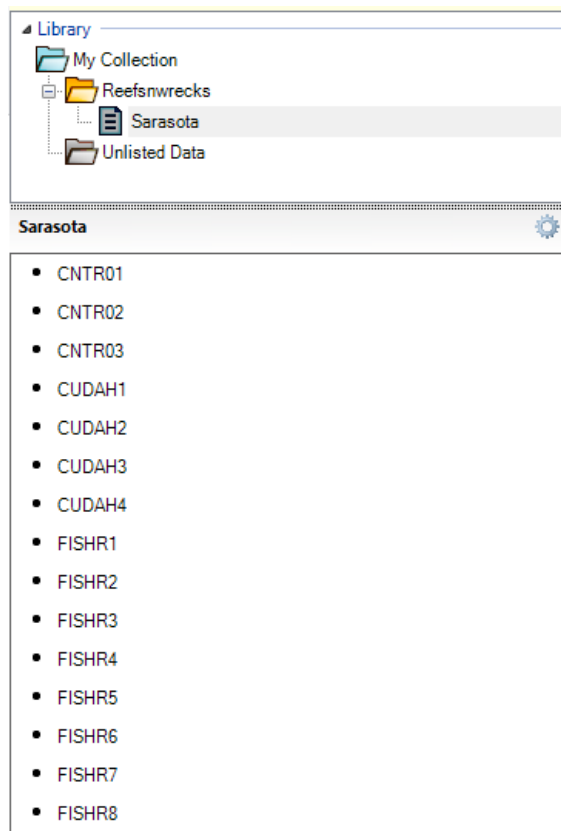
7. While highlighted, change the name to the County where the reefs are. For example, "Sarasota". If not highlighted, select the list and click twice slowly to highlight text then change the name.



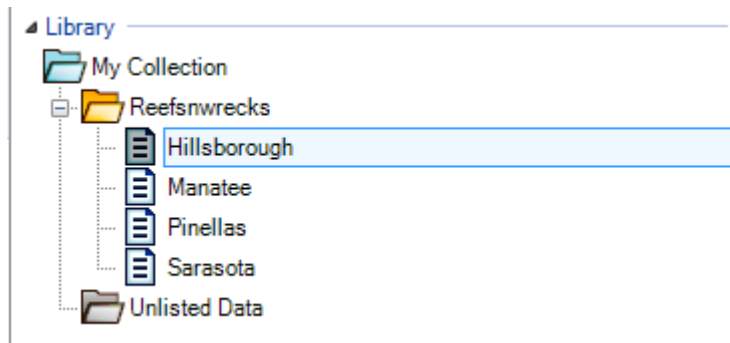
8. Now we want to import the GPX files that you downloaded from the Reefsn wrecks website. Go to the folder which you saved the files and run the reef.exe file, if you have not already done so and extract the <reef>.gpx file. Go to HomePort, Highlight the county, (e.g., Sarasota) and select File > Import into <County>, browse to the <reef>.gpx file, select it and press Open. You should see the waypoint for the reef listed in the lower left corner of the screen.



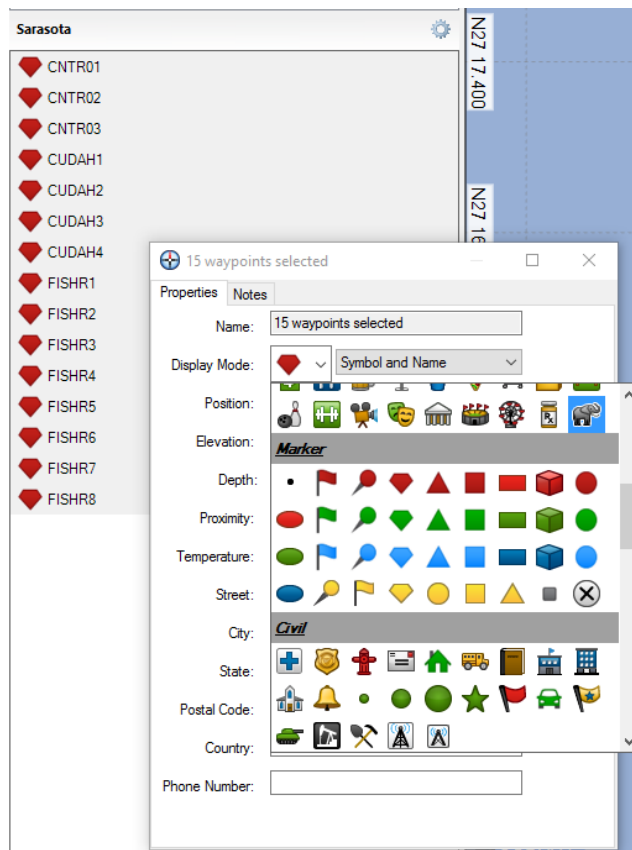
9. Repeat this last step for all downloaded GPX files that are within this county.



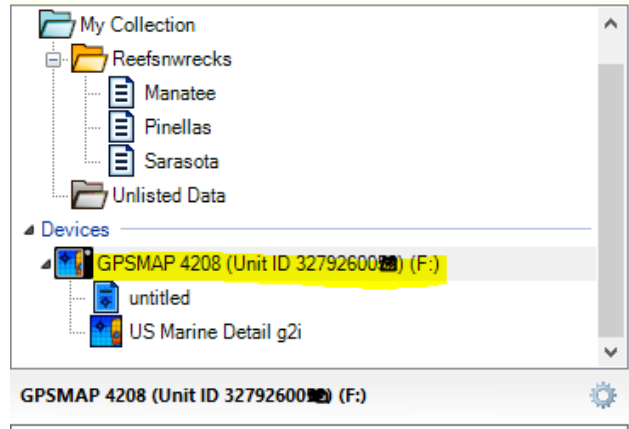
10. If you have downloaded multiple counties, create another List by selecting Reefs wrecks and selecting File > New > List. Name the new list as before. Import waypoints into that list like before.



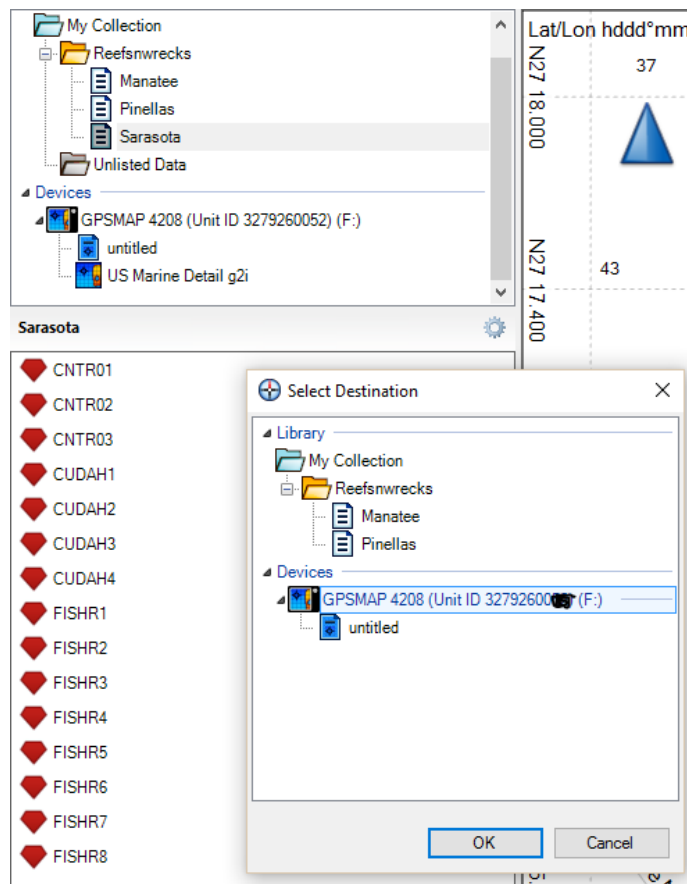
11. If you want to change the waypoint symbol, select the waypoints you want to change by selecting the first waypoint then pressing and holding Shift then selecting the last waypoint. This will select the first, last and all the waypoints in the middle. Right mouse click any waypoint selected and select Open. The Name field should display ## waypoints selected. In the Display Mode box select the Pull down menu and select a symbol. Select a unique symbol so you will know that these are exact, spot-on waypoints as opposed to unconfirmed waypoints.



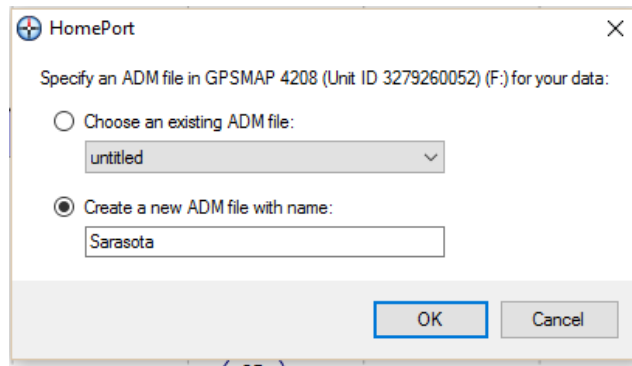
12. The next step is to insert an SD card into your GPS unit, format and copy you're built-in maps. Follow the instructions in your GPS user manual.
13. Remove the SD card from your GPS and plug it into your computer. If your GPS uses a micro-SD card you will need a micro to regular SD adapter (should have come with the micro-SD card). If you do not have a built in SD slot in your computer, you will need to purchase a USB to SD card adapter. Once you have inserted your SD card into the computer, HomePort should sense it and display it under Devices in the left column.



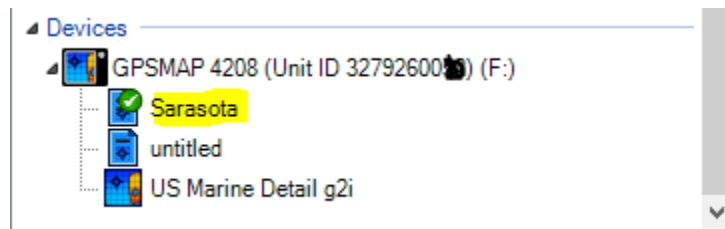
14. To transfer the waypoints to the SD card select a list, e.g. Sarasota, and right click you mouse and select Send To..., select your SD card under Devices and press OK.



15. Leave the default selection of Create a new ADM file with name: <County> e.g. Sarasota.



16. Press OK. You will see a list created on your SD card and the waypoints transferred.



17. Remove the SD card from the computer and insert it into your GPS unit. The card should be automatically sensed and the Data manager screen should come up. Backup the waypoints in your GPS if you want to save them and then follow the waypoint loading instructions from your user manual. e.g., a GPSMap had the following instructions.

VIEWING INFORMATION

Viewing User Data

To view user data from the Home screen, select **Information > User Data**.

Waypoints—view a list of all saved waypoints ([page 25](#)).

Routes—view a list of saved routes ([page 27](#)).

Tracks—view a list of saved tracks.

Data Transfer—transfer waypoints, routes, and tracks to and from an SD card or network.

To transfer data to or from an SD card:

1. Insert an SD card into the SD card slot on the front of the unit.
2. From the Home screen, select **Information > User Data > Data Transfer > Card**.

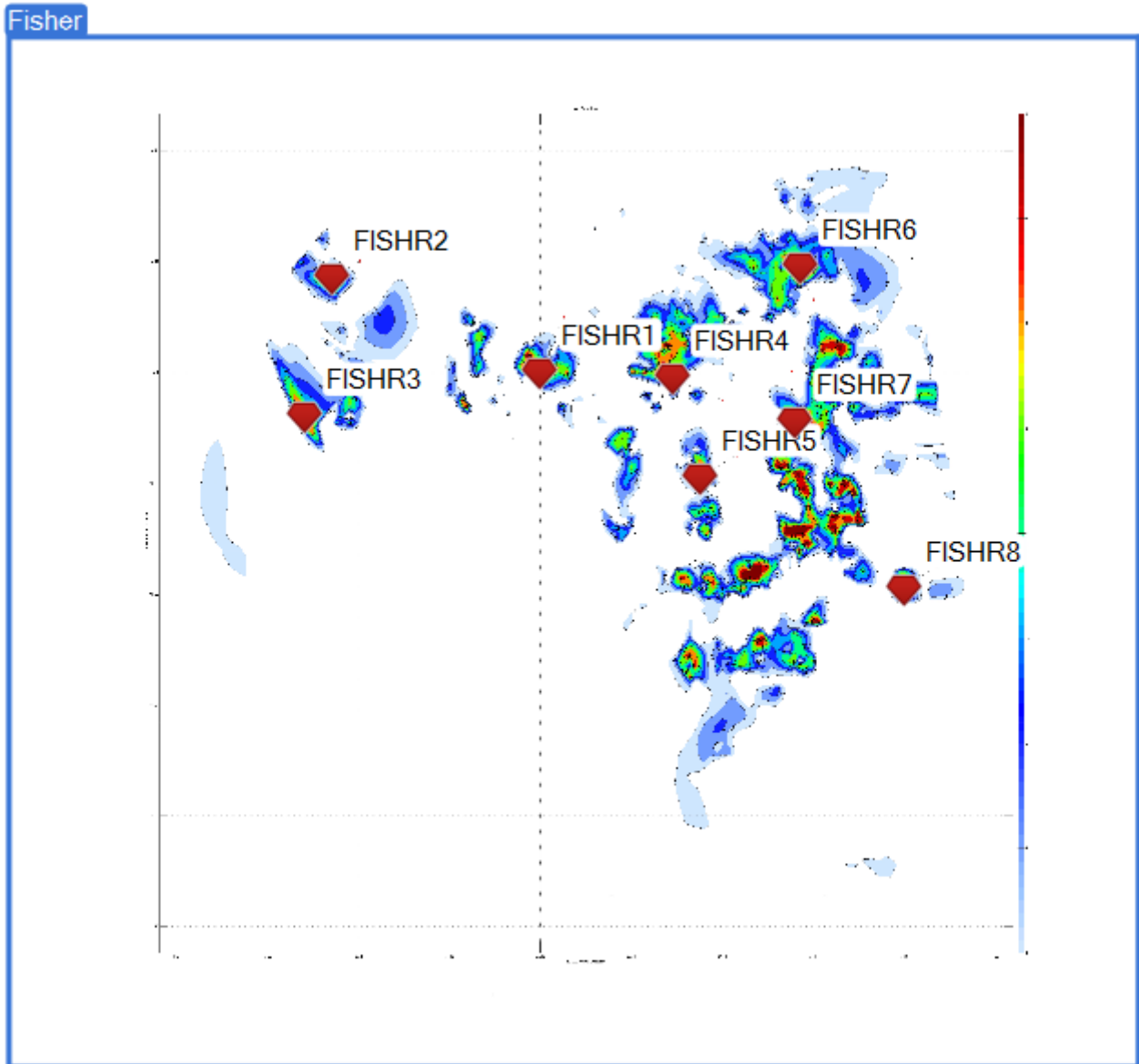
Complete one of the following:

- Select **Save To Card** to save waypoints, routes, and tracks to the SD card.
- Select **Merge From Card** to transfer data from the SD card to the unit and combine it with existing user data.
- Select **Replace From Card** to overwrite items on your unit.

18. Select each list you want to load one at a time. To load the first list, you might use **Replace** From Card that will delete all waypoints and load the new set. To load the second to last list you should select **Merge** From Card so the additional waypoint is added to the existing waypoints without deleting any.

19. In addition, you can load our KMZ Custom charts into Homeport and see our contour maps as you would see them on your hand held GPS units. (See below). Unfortunately, Garmin has chosen not to support Custom Maps on their line of Marine Depth sounders. However, by using Homeport, you can view our

custom contour charts and set additional waypoint on points that you want to explore. Then transfer all the waypoints to your Marine Depth sounder.



For Garmin Marine Chartplotters we have the QDC format. Please check out the QDC User Manual for details and examples. (Press Sample next to any reef QDC format selection.)

Any questions about the Custom Contour Charts should be directed to Bob@reefsnwrecks.com.

NOTE: We have set the price of Sarasota, Alan Fisher Reef to \$0.08 so you can download a full reef package in any or all the available formats and try them out. Just follow all the instructions above to add it to your cart.

Sorry I have to charge 8¢ because PayPal cannot accept a \$0 payment.